

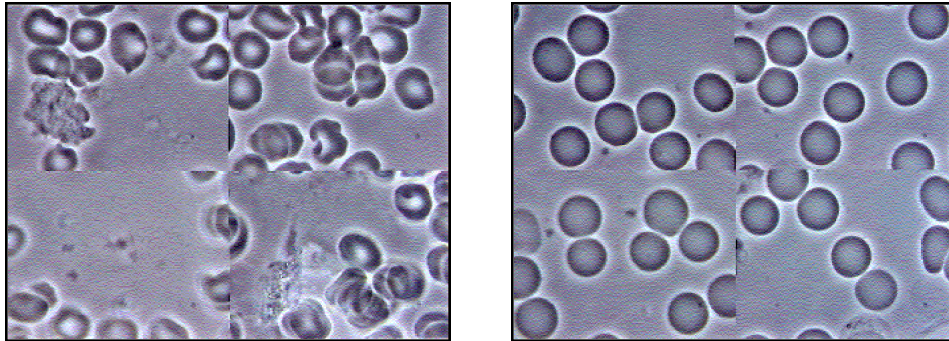
QLink® Research Update

Studies conducted at the University of California at Irvine, Imperial College at London, University of Vienna's Institute of Cancer, University of Vienna's Institute of Environmental Health, and independent clinics have persuaded researchers of the QLink's efficacy.

HUMAN CELLULAR STUDIES

Effects of QLink Pendant on the Blood and Biological Terrain [Apr 2001]

In two separate live blood microscopy studies conducted by microbiologist Robert Young, PhD, live and dried blood tests are used to test for disturbances in the blood morphology. Results suggest that the QLink pendant helps to mediate the effects of stress by enhancing both the blood terrain and the integrity of human blood cells. Thus, significant improvements in blood morphology are seen with the QLink pendant. The following are 4 panel microscopy images of blood morphology before and 72 hours after wearing the QLink in a subject:



Effects of QLink Ally on Stress Tolerance of Human Tissue Cells [May 2001]

An in-vitro study conducted at the University of Vienna shows that human tissue cells are more resistant and respond better to chemical stress when exposed to the QLink Ally with SRT. Human tissue cells were chemically stressed using a chemical toxin. The study shows a significant decrease in the number of dead tissue cells under chemical stress with QLink. This suggests that in-vitro exposure to the QLink with SRT helps the cellular membrane remain intact and more resilient against stressors.

ELECTRODERMAL STRESS RESPONSE STUDIES

Effects of QLink Pendant on Skin Conductivity Changes and Stress [Mar 2000]

In a clinical study conducted by Dr Tyteeka Reye at the Acacia Whole Health Clinic in Denver, the energy states of 40 acupuncture points are tested in the presence of an EMF stressor. After two minutes, the QLink pendant increases by an average of 292% the number of acupuncture points which have optimal energy states and restored balance. Baseline readings are improved by an average of 41%.

University of Vienna Analysis of Skin Conductivity [Apr 2001]

Professor Michael Kundi, PhD, Institute of Environmental Health, conducted an independent, comprehensive analysis of Dr Reye's clinical study which supports the significant findings.

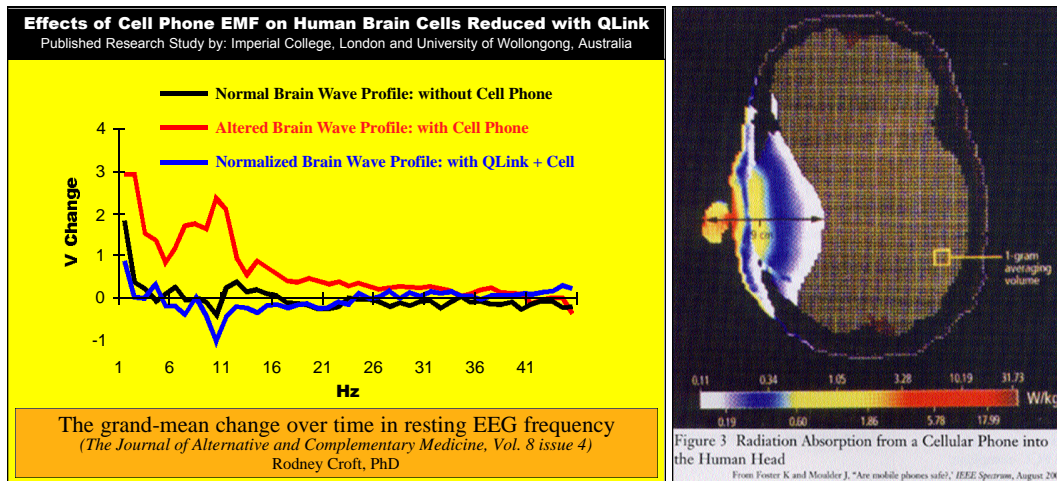
BRAIN WAVE EEG STUDIES

Effects of QLink on Human EEG Responses [Apr 2000]

A double-blind study conducted by Norman Shealy, MD, and William Tiller, Professor Emeritus, Stanford University, suggests that the QLink pendant helps to mitigate the disruptive effects of EMF on the electrical activity (EEG patterns) of the brain. This published study demonstrates beneficial effects of the QLink in stabilizing EEG responses in the presence of transient (variable) EMF stressors.

Effects of QLink Ally on Human EEG Responses [Oct 2001]

A blind research study of brain changes in 24 normal adults, published in the Journal of Alternative and Complementary Medicine, and conducted by Dr Rodney Croft, in collaboration with Imperial College Medical School, London and The Brain & Behaviour Research Institute at the University of Wollongong, Australia, indicated QLink reduced the effects of mobile phones on human brain cells.



BEHAVIORAL AND PERFORMANCE STUDY

Effects of QLink ClearWave on Anxiety Levels within the Classroom [Jun 2001]

A double-blind study conducted by David Eichler, PhD, Behavioral Consultant, indicates that the QLink ClearWave helps to reduce anxiety experienced in students while in the public school setting. The study involved a school district in Northeast Kansas. The implications of reduced anxiety can be improved classroom performance and improvement in overall attitude and well-being of the student.

Muscle Weakness Research Study

Effects of QLink Pendant on Muscle Weakness and other Chronic Symptoms Attributed to EMF Exposures [May 1998]

In a double-blind clinical study conducted by Dr Eric Pierotti, DC, muscle weakness related to acupuncture system imbalances and imbalances induced by exposure to EMF are negated when wearing the QLink pendant. Dr Pierotti suggests that the QLink pendant enhances the natural healing process as indicated by the reduction of chronic and long term symptoms in clinical patients.

To access these studies, as well as the in-vitro study conducted at the University of California, Irvine, link to the Scientific Test Results page on www.clarus.com

The statements in this document have not been evaluated by the Food & Drug Administration. The QLink is not intended to diagnose, treat, cure or prevent disease.

